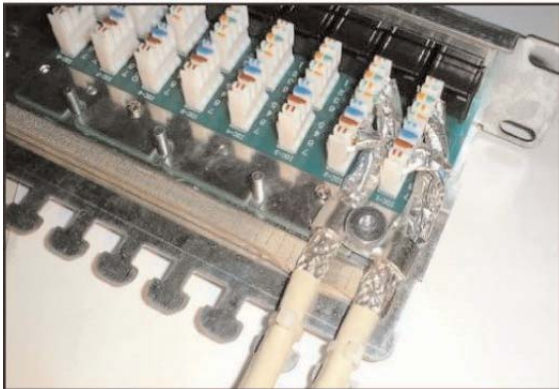


7. Gently thread, then cut, the cable tie.

### NOTE

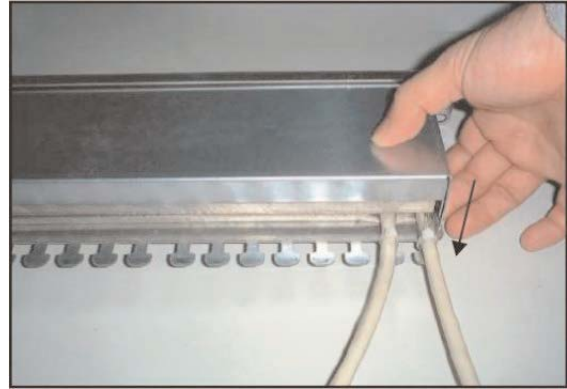
**Do not use too much force; it might deform the cable.**



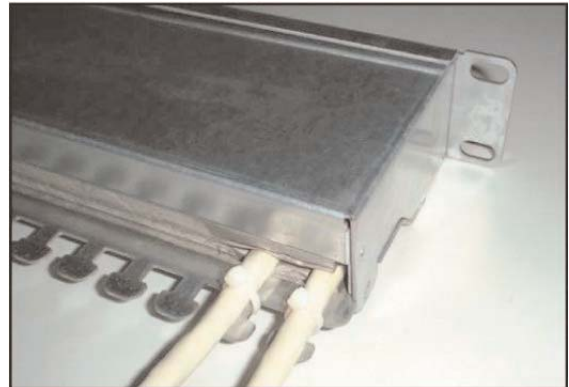
8. Terminate the rest of the cables. Then follow steps 9–11 to secure the cable to the patch panel.



9. Insert the front side of the cover into the panel hood.



10. Push down the cover and snap it into the knob on each side.



11. If you want to install more cables, reverse Steps 9 and 10 to open the cover.

### TRADEMARKS USED IN THIS MANUAL

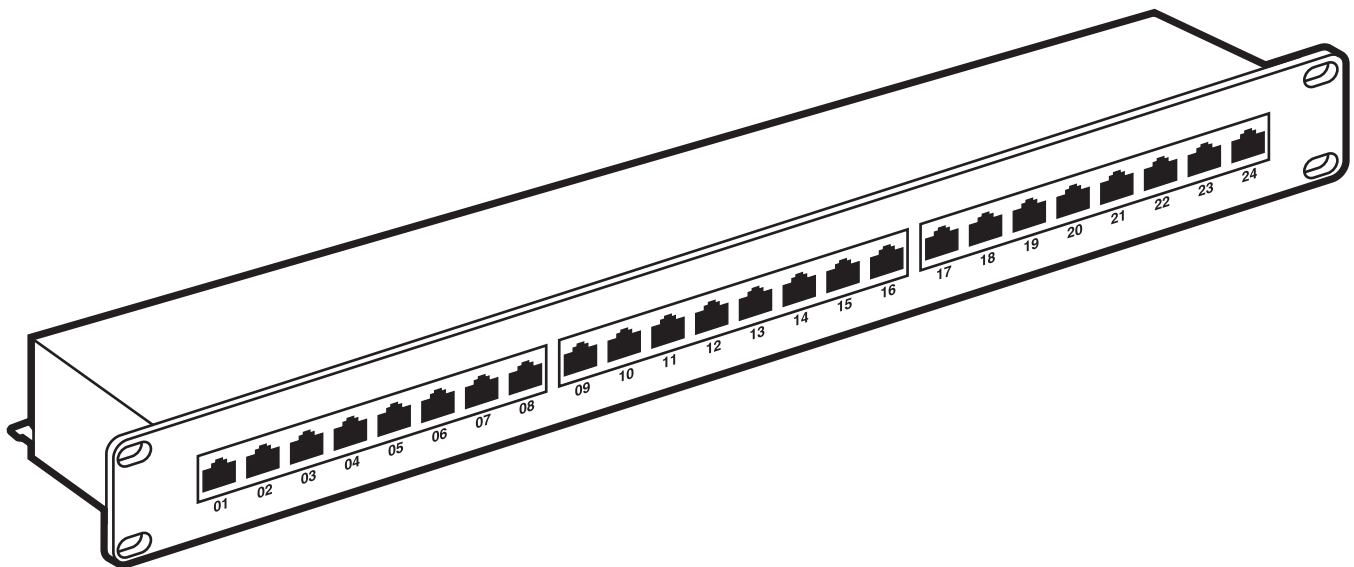
BLACK BOX and the Double Diamond logo are registered trademarks of BB Technologies, Inc.

UL is a registered trademark of Underwriters Laboratories Inc.

*Any other trademarks mentioned in this manual are acknowledged to be the property of the trademark owners.*



# CAT6 Shielded Patch Panel, 24-Port



---

**CUSTOMER  
SUPPORT  
INFORMATION**

Order **toll-free** in the U.S.: Call **877-877-BBOX** (outside U.S. call **724-746-5500**)  
FREE technical support 24 hours a day, 7 days a week: Call **724-746-5500** or fax **724-746-0746**  
Mailing address: **Black Box Corporation**, 1000 Park Drive, Lawrence, PA 15055-1018  
Web site: [www.blackbox.com](http://www.blackbox.com) • E-mail: [info@blackbox.com](mailto:info@blackbox.com)

# CAT6 SHIELDED PATCH PANEL, 24-PORT

## Specifications

**Frame:** Nickel-plated

**Connector:** RJ-45 jack (8-wire)

**Compliance:** IEC 60603-7-5 (shielded),  
TIA/EIA-568B.2-1 (link) Category 6

**Connector Shield:** 0.098" (0.25) mm thick copper alloy plated with tin

**Contact Resistance:** 20 milli ohms maximum

**Contacts:** 0.018" (0.46 mm) diameter phosphor bronze, 50 µm gold over nickel plating

**Cover Shield:** Nickel-plated

**DC Resistance:** 0.1 ohms maximum

**Housing:** Glass-filled polyester UL® 94V-0, black

**IDC:** 110-type IDC, accepts 22–26 AWG solid wire

**Insulation Resistance:** 500 Mega ohms minimum

**Rated Current:** 1.5 amps

**Wiring:** Supports T568A/T568B

**Size:** 1.75"H (1U) x 19"W x 4.3"D  
(4.5 x 48.3 x 10.9 cm)

**Weight:** 4 lb. (1.8 kg)

## Overview

### WHAT THE PACKAGE INCLUDES

- CAT6 patch panel base unit
- Patch panel cover
- (48) transparent IDC covers
- (24) cable ties
- Ground wire
- (3) plastic ID cover holders
- (3) paper ID labels
- (4) 12-24 cuphead screws

- (4) 10-32 cuphead screws
- This user's manual

### TOOLS YOU NEED TO SUPPLY

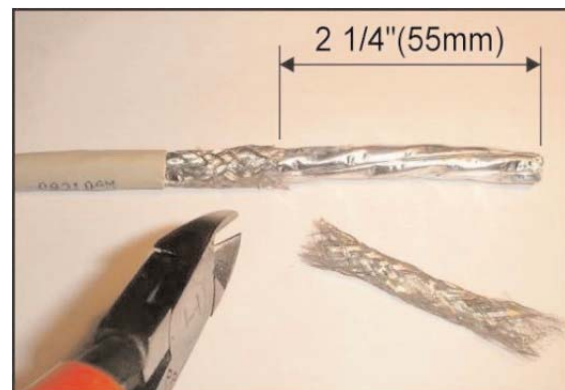
- Punchdown tool
- Cable stripping tool
- Cable cutters

## Installation

Follow Steps 1–11 to install the CAT6 Shielded Patch Panel, 24-Port.



1. Strip the outer plastic jacket to about 3" (76 mm).



2. Cut 2 1/4" (55 mm) off the copper braid.

## CAT6 SHIELDED PATCH PANEL, 24-PORT



- 3a. If the STP cable has an outer diameter of less than 0.2" (6 mm), place the cable braid under the bracket and cable jacket on the mesh strip. Then attach the cable to equipment ground.



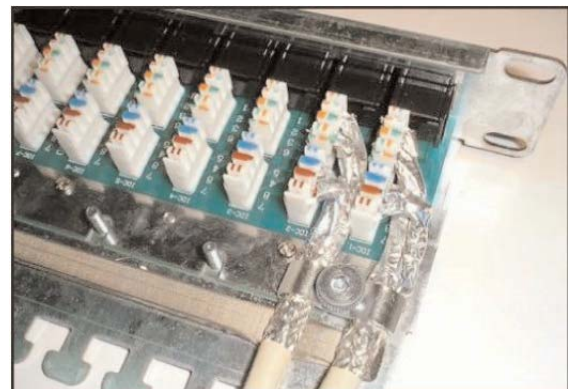
- 3b. If the STP cable has an outer diameter of more than 0.2" (6 mm), bend back the copper braid and place the braid under the bracket. (Place the bracket exactly where the braid bends.)



4. Cut each single wire's aluminum foil to expose individual pairs.



5. Arrange the wires according to the color. Use a punchdown tool to terminate each pair.



6. After terminating each pair, make sure the aluminum foil fully covers the wires.