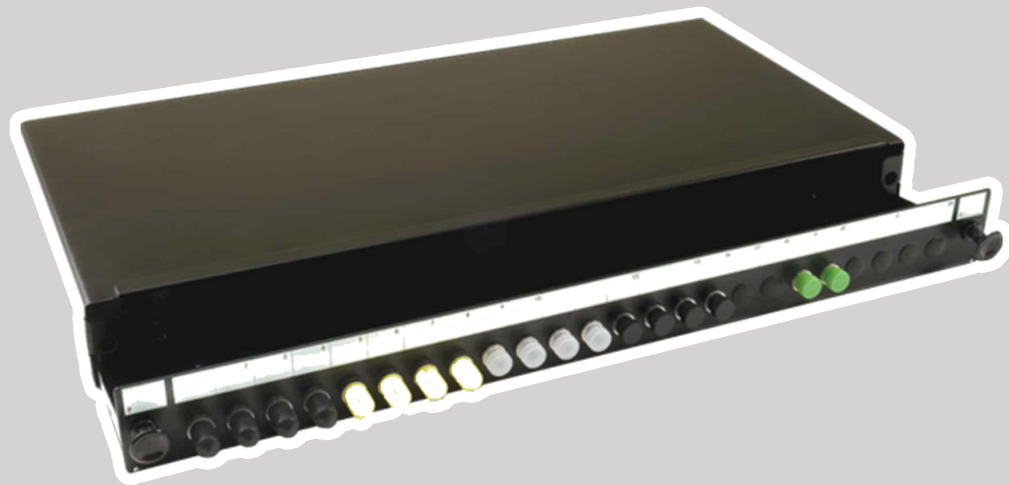


DATA SHEET

JPU24LCMM, JPU24STMM, JPU24SCMM, JPU24LCSM

TRU BLACK SLIDING PATCH PANEL

24/7 TECHNICAL SUPPORT AT 877.877.2269 OR VISIT BLACKBOX.COM



BLACK BOX®

OVERVIEW

1RU BLACK SLIDING PATCH PANEL - 24 POSITION ST/FC UP TO 24 FIBERS DATA SHEET

INTRODUCTION

This robust 1RU sliding patch panel has been designed to accept up to 24 fibers. The ability to use a full array of adaptor types offering a flexible solution to the end-user, enabling them to incorporate a multi-functional panel that allows easy access during installation or re-work with no disturbance of the existing cable or fibers. In the addition to the array of adapters, the panel also offers multiple cable entry solutions, up to 4 standard cable entry points for, loose tube, tight buffer, pre-terminated, and steel tape armored cable. Each panel has integrated strength member tie positions also with the additional removable plate at the rear of the panel allows the installation of steel tape armored cable.

FEATURES

- Up to 24 fibers in 1RU
- 24 Adaptor positions
- 45° open working angle
- RoHS and REACH SvHC
- Multiple Adaptor options available
- Individually labeled ports
- Accepts loose tube, distribution and pre terminated cables
- Fits standard 19"
-

FEATURES

- Data centers, premise installations, telecommunication networks
- Data communication
- Ethernet, Fiber Channel, ATM, LAN, MAN and WAN
- Indoor applications

SPECIFICATIONS

1RU BLACK SLIDING PATCH PANEL - 24 POSITION ST/FC UP TO 24 FIBERS DATA SHEET

1RU BLACK SLIDING PATCH PANEL	
SPECIFICATION	DESCRIPTION
U SIZE	1RU (44.4mm)
WIDTH	482mm
DEPTH	205mm
NET WEIGHT	2.5 kgs
PACKAGED WEIGHT	3 kgs
PACKAGED DIMENSIONS	530mm W X 55mm H x 260mm D
IP RATING	IP20
SUITABLE FOR ADAPTOR TYPE	ST/ FC
NUMBER OF PORTS	24
CABLE ENTRY 20MM	2
CABLE ENTRY 25MM	2
MOUNTING ADJUSTMENT RANGE	50mm
MATERIAL	Cold- rolled steel
MATERIAL THICKNESS	1.2mm
MATERIAL COATING	Powder coating
COLOR	RAL 9004
OPERATING TEMPERATURE	-40°C to +50°C
DESIGNED IN ACCORDANCE WITH	TIA/EIA 568.C, ISO/IEC 11801, EN50173, IEC60304, IEC61754
MATERIALS COMPLIANT TO	RoHS, Reach/SVHC



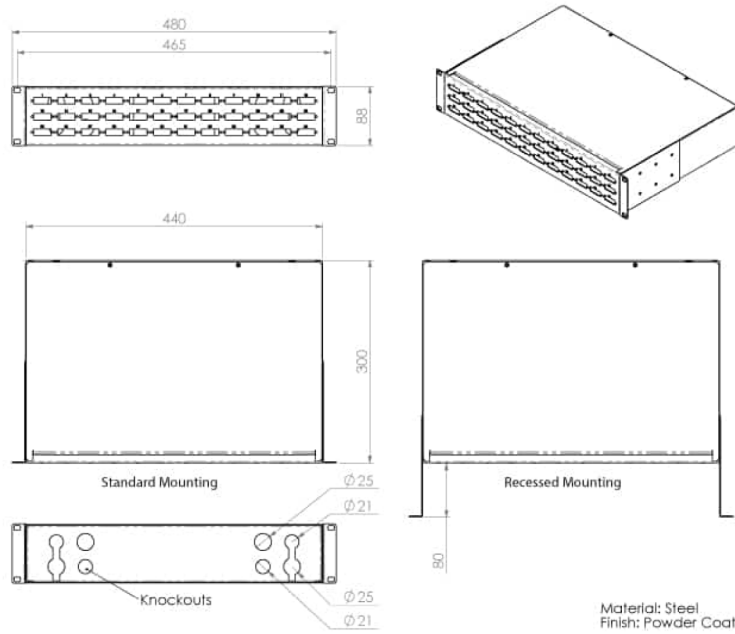
PRODUCT IMAGE

TRU BLACK SLIDING PATCH PANEL - 24 POSITION ST/FC UP TO 24 FIBERS DATA SHEET



TYPICAL APPLICATION

TRU BLACK SLIDING PATCH PANEL - 24 POSITION ST/FC UP TO 24 FIBERS DATA SHEET



Drawing provided for outer dimensions only

ORDERING INFORMATION

TRU BLACK SLIDING PATCH PANEL - 24 POSITION ST/FC UP TO 24 FIBERS DATA SHEET DATA SHEET

ITEM	CODE
24-port Multimode	
LC Sliding Fibre Optic Patch Panel	JPU24LCMM
ST Sliding Fibre Optic Patch Panel	JPU24STMM
SC Sliding Fibre Optic Patch Panel (end of life)	JPU24SCMM
24-Port Single-Mode	
LC Sliding Fibre Optic Patch Panel	JPU24LCSM

NOTES _____

DISCLAIMERS

Black Box Corporation shall not be liable for damages of any kind, including, but not limited to, punitive, consequential or cost of cover damages, resulting from any errors in the product information or specifications set forth in this document and Black Box Corporation may revise this document at any time without notice.

EOL indicated products will be discontinued once remaining stock is depleted. Please call our sales department for more information or alternative items.

ABOUT BLACK BOX

Black Box® is a trusted IT solutions provider delivering cutting-edge technology solutions and world-class consulting services to businesses across the globe. The breadth of our global reach, continuous innovation, and depth of our expertise accelerate customer success by bringing people, ideas, and technology together to solve real-world business problems. Our IT infrastructure solutions, services, and products enable secure, flawless connectivity and meaningful collaboration for businesses in every major market across six continents. To learn more, visit the Black Box website at www.blackbox.com.

Follow the company on X, formerly known as Twitter @BlackBox_ns.

TRADEMARKS

Black Box and the Black Box logo type and mark are registered trademarks of Black Box Corporation.

Any other trademarks mentioned in this document are acknowledged to be the property of the trademark owners.

