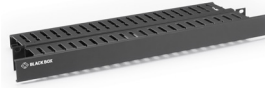




RMT100A-R4



RMT105A



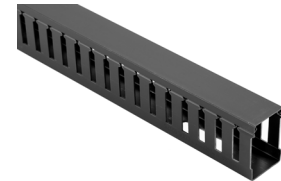
RMT701



RMT200A-R4



RMT202A-R4



RMT312A

### Horizontal Cable Managers – Single Sided

1U and 2U Fingers Duct with Cover neatly organize cabling while reducing cable stress

Installation's a snap - mounts easily onto any 19" rack, cabinet or enclosure

Includes all necessary mounting hardware

Heavy Duty Carbon Steel with Black Matte finish

TAA Compliant for GSA Schedule Purchases

(1U) **RMT100A-R4**

(1U) **RMT701** - with brush strip

(2U) **RMT102A-R4**

### Horizontal Cable Managers – Double Sided

1U and 2U Finger Duct with Cover neatly organize cabling while reducing cable stress

Dual-sided design features slotted ducts on both front and rear, providing ample space for all of your cabling

Includes all necessary mounting hardware

Heavy Duty Carbon Steel with Black Matte finish

TAA Compliant for GSA Schedule Purchases

(1U, Flush Front-to-Back) **RMT105A**

(2U, Flush Front-to-Back) **RMT107A**

### Vertical Cable Managers – Single Sided

Installation's a snap; mounts easily onto any distribution rack

Includes cable passthrough holes for improved cable runs

Comes with all necessary mounting hardware

Heavy Duty Carbon Steel with Black Matte finish

TAA Compliant for GSA Schedule Purchases

(Side-Mount) **RMT200A-R4**

(Center-Mount) **RMT201A-R4**

### Vertical Cable Managers – Double Sided

Installation's a snap; mounts easily onto any distribution rack

Center-Mount Ducts mount in between two racks for shared cable management

Double-sided ducts provide twice the cable management space

Includes cable passthrough holes for improved cable runs

Comes with all necessary mounting hardware

Heavy Duty Carbon Steel with Black Matte finish

TAA Compliant for GSA Schedule Purchases

(Side-Mount) **RMT202A-R4**

(Center-Mount) **RMT203A-R4**

### Slotted-Duct Cable Raceways

Raceways run flush with one another for increased density and a neater appearance

Slotted holes provide for flexible cable mounting

Screws into walls and other surfaces to provide organized cable management

Innovative fingered design holds cable securely in place and enables quick and easy changes

Constructed of rugged—yet lightweight—PVC material

Included Raceway Cover's latch design fits "fingers" snugly

Black, 5.715 cm (H) x 182.88 cm (W) x 3.81 cm (D)

**RMT312A**



**Watch the Product Video**