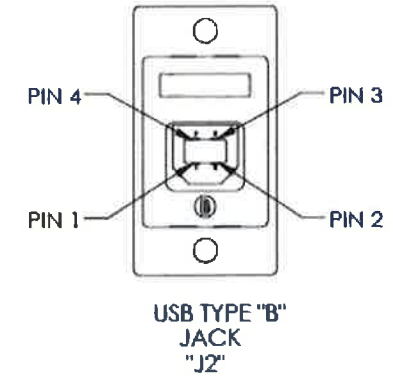
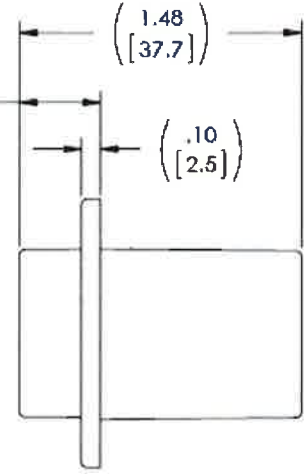
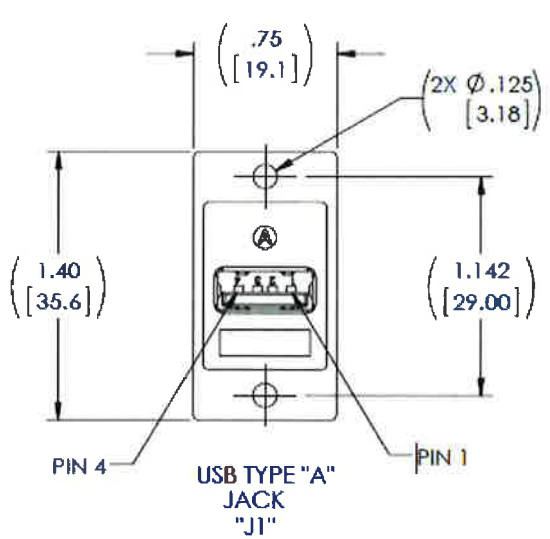


REVISIONS		
Rev	DESCRIPTION	DATE
A	INITIAL RELEASE	



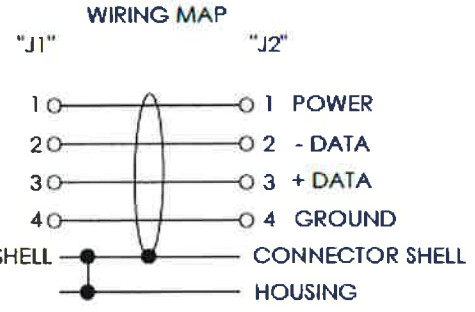
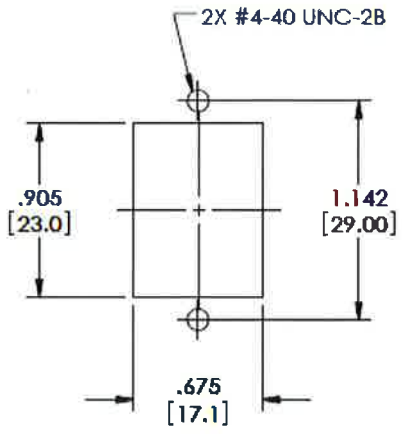
NOTES:

MATERIAL:
 COUPLER HOUSING: ABS, UL94V-0.
 CONNECTOR INSULATORS: WHITE, PBT WITH GLASS FIBER.
 TYPE "A" CONNECTOR CONTACTS: PHOSPHOR BRONZE.
 TYPE "A" CONNECTOR SHELL: BRASS.
 TYPE "B" CONNECTOR CONTACTS: PHOSPHOR BRONZE.
 TYPE "B" CONNECTOR SHELL FRONT: BRASS.
 TYPE "B" CONNECTOR SHELL BACK: STEEL.
 PCB: EPOXY GLASS FP-4, 94V-0 FLAMMABILITY RATING.

FINISH:
 COUPLER HOUSING: CHROME.
 CONNECTOR CONTACTS: GOLD, 30µ INCHES.
 CONNECTOR SHELLS: NICKEL.

ELECTRICAL:
 CURRENT RATING: 2 AMP MAX.
 VOLTAGE RATING: 140 VDC.

ENVIRONMENTAL:
 OPERATING TEMPERATURE: -20° C TO +80° C.



UNLESS OTHERWISE SPECIFIED: DIMENSIONS ARE IN INCHES TOLERANCES: FRACTIONALS: SEND ± ANGULAR: MAJOR: SEND ± TWO PLACE DECIMAL: ± THREE PLACE DECIMAL: ±				TITLE: FAUSB31	
DRAWN	NAME			DATE	REV
ENG APPR	Checked By	3/11/2013	A		
CHECKED	Checked By	3/11/2013	SIZE B		
COMMENTS:	DWG. NO.		SHEET 1 OF 1		
MATERIAL: CIG		SCALE: 1:1			
FINISH: POWDER COAT					
DO NOT SCALE DRAWING					

The information contained in this document is the sole property of Black Box Corporation of Pennsylvania. Any reproduction in part or whole without the written permission of Black Box Corp. is prohibited.
 ©Copyright 2012 Black Box Corporation of Pennsylvania (Black Box Network Services). All Rights Reserved.