

SETUP GUIDE

SAMSUNG SOC INSTRUCTIONS FOR ICOMPEL CONTENT COMMANDER

SAMSUNG SOC FOR ICOMPEL CONTENT COMMANDER

24/7 TECHNICAL SUPPORT AT 1.877.877.2269 OR VISIT BLACKBOX.COM



TABLE OF CONTENTS

1. INSTALLATION	3
1.1 Setup	3
1.2 Downloading Content	3
1.3 Creating Configurations.....	4
1.4 Editing or Deleting Configurations.....	5
1.5 Installing Configurations	6
1.6 Time Zone	7
2. PORTRAIT MODE	8
2.1 Configuration Based	8
2.2 Display Based	9
3. GAPLESS PLAYBACK	10
3.1 Configuration	10
4. FULL SCREEN VIDEO	11
4.1 Custom Position and Size.....	11
5. RECOMMENDED SOFTWARE VERSION	12
6. FACTORY RESET	13
7. SUPPORTED FORMATS	14
7.1 Video and Audio.....	14
8. KNOWN LIMITATIONS	15
8.1 Samsung Limitations	15
8.1.1 Video Decoder	15
8.1.2 Audio Decoder.....	15
9. ZONE LIMITS FOR BEST PERFORMANCE	16
APPENDIX. DISCLAIMER/TRADEMARKS	17
A.1 Disclaimer	17
A.2 Trademarks	17



CHAPTER 1: INSTALLATION

Plug in the screen and power on.

A keyboard can be plugged into the screen to assist with setup.

For out of the box setups, please follow Steps 1-8 to take you through the on-screen wizard.

Otherwise, go to Step 9.

1.1 SETUP

1. Using the remote, select your preferred menu language and press Next.
2. Select the orientation for on-screen menus and content and press Next. Content orientation can be adjusted from the ICC at any time.
3. Set Auto Power Off to Off as otherwise the screen may unexpectedly turn off.
4. Connect the player to your preferred network. SoC players support both wired and wireless connectivity. Once connected, press Next.
5. Set the date and time and press Next.
6. Play via URL Launcher and when prompted enter the URL of your ICC in the format:


```
http://icc*****.domain/soc
```

or

```
http://<IPaddress>/soc
```

NOTE: Make sure you append '/soc' to the end of the URL.

7. Once entered, press Next.
8. Now press OK. You should now be presented with the Samsung Signage menu. If this does not appear, then press the Home button on the remote.
9. To direct the SoC player to a different ICC, select Change URL and input the URL of your ICC following the format specified in Step 6.
10. Once the URL is correct, select URL Launcher.
11. The SoC player will now download the SoC app and you will be presented with an install code page.
12. Enter a configuration install code and press done ("enter" on a keyboard).

The install code can be found by navigating to the Manage Players page of the ICC and selecting the Settings  icon in the left panel. Here you will be able to manage multiple configurations. Each configuration on this page will have its own unique install code.



1.2 DOWNLOADING CONTENT

1. Type in the install code using the Samsung remote or a keyboard.
2. The factory shipped install code is DEFAULT0 (this is the default configuration).
3. Press Enter on the keyboard or OK on the remote.
4. You should see the Player Installation Progress screen.
5. Once the player has installed it will automatically reboot.
6. If the channel has been published the player will download content and switch to playback mode.

NOTE: If the channel has not been published, it will show you the channel ID and wait for it to be published in the ICC.

CHAPTER 1: INSTALLATION

1.3 CREATING CONFIGURATIONS

1. Click the Manage Players  icon in the top right hand corner of the ICC. You can also reach this page by navigating Home > Manage Players.
2. Click the Settings  icon on the left-hand side.

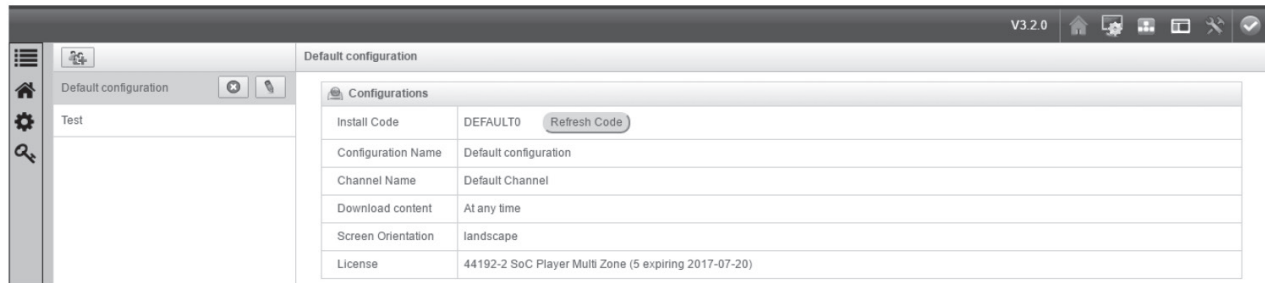



FIGURE 1.

3. Click the Add Configuration  button.
4. Type the name of the configuration and from the drop-down menus select the appropriate channel, screen orientation and license you want your configuration associated with. If you wish to restrict the channel download to specific times then click Restricted Times and enter the appropriate values.

This feature allows you to add and edit configurations. Therefore, you can install screens with pre-set orientations and channels.

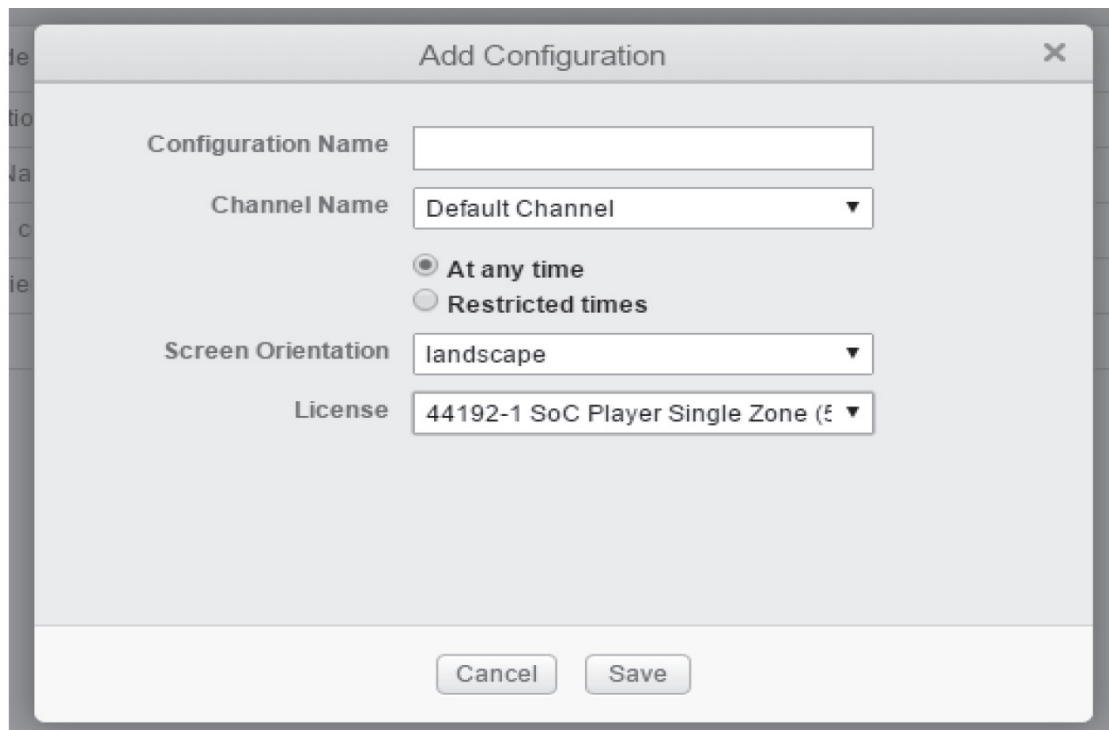




FIGURE 2.

CHAPTER 1: INSTALLATION

1.4 EDITING OR DELETING CONFIGURATIONS

1. Click the Manage Players  icon in the top right hand corner of the ICC. You can also reach this page by navigating Home > Manage Players.
2. Click the Settings  icon on the left-hand side.
3. Hover over a configuration in the list. It will turn blue and two icons will appear to the right.

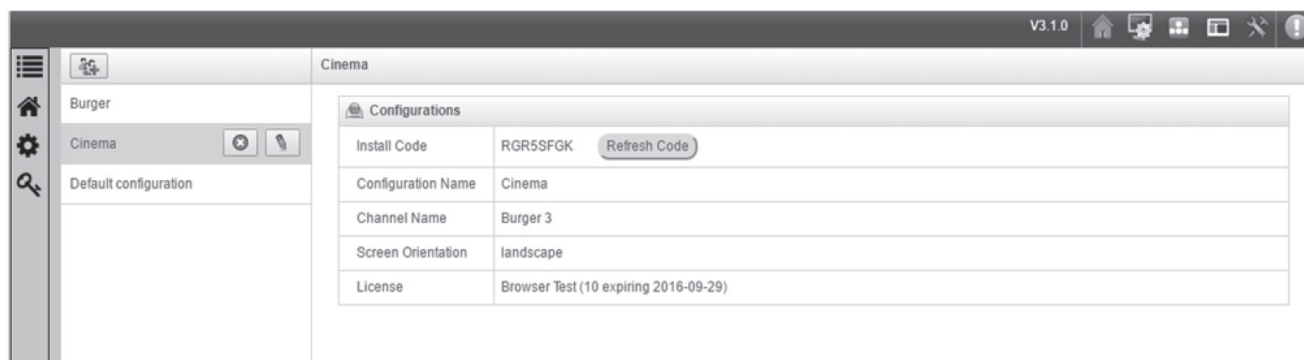



FIGURE 3.

4. To edit:
 - 4a. Click the Edit  icon and a pop-up will appear showing you the Installation code.
 - 4b. You can rename the configuration, select a different channel or change the screen orientation or associated license.

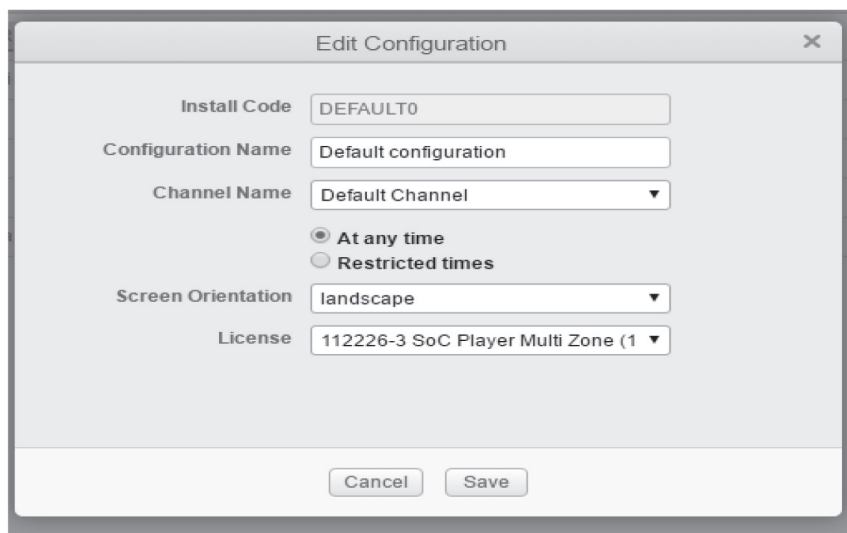




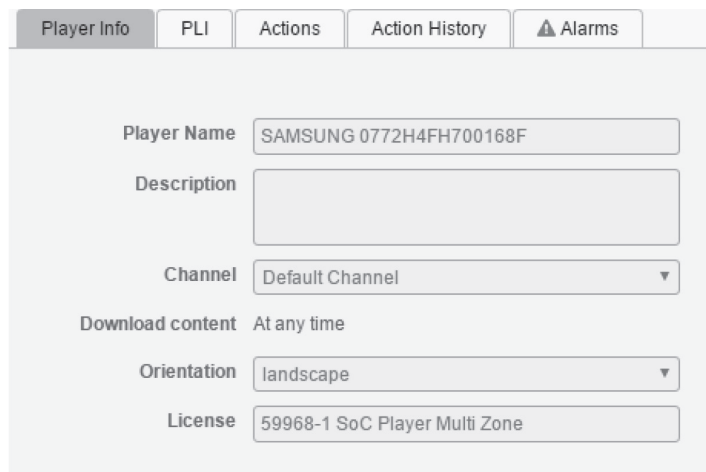
FIGURE 4.

5. To delete:
 - 5a. Click the Delete  icon.
 - 5b. This will open a pop up asking if you are sure. Select Yes.

CHAPTER 1: INSTALLATION


1.5 INSTALLING CONFIGURATIONS

1. On your ICC, click the Manage Players  icon or navigate Home > Manage Players.
2. Select the player from the list.
3. Click the Actions tab.



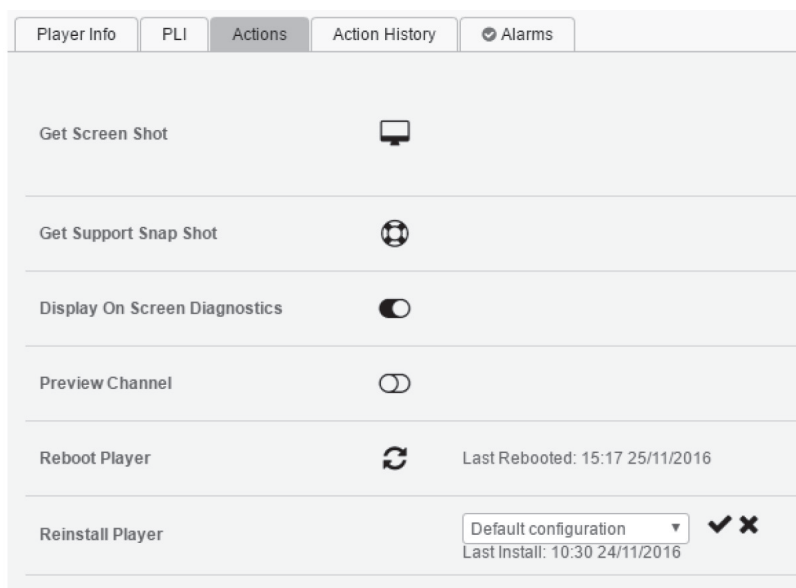
Player Info	PLI	Actions	Action History	Alarms
Player Name	SAMSUNG 0772H4FH700168F			
Description				
Channel	Default Channel			
Download content	At any time			
Orientation	landscape			
License	59968-1 SoC Player Multi Zone			

FIGURE 5.

4. Click on the Plug  icon.
5. Select the preferred configuration from the drop-down menu.

NOTE: During initial setup, when a SoC player displays the install code page, you can use the reinstall feature on the ICC to install the player. This allows for a remote install rather than typing an install code into each player.

6. Click the tick button and the new configuration will install.











Player Info	PLI	Actions	Action History	Alarms
Get Screen Shot				
Get Support Snap Shot				
Display On Screen Diagnostics				
Preview Channel				
Reboot Player	 Last Rebooted: 15:17 25/11/2016			
Reinstall Player	Default configuration    Last Install: 10:30 24/11/2016			

FIGURE 6.

CHAPTER 1: INSTALLATION

1.6 TIME ZONE


1. Press the Menu button on the remote.
2. Scroll down to System.
3. Select Time.
4. Click Clock Set.
5. Press Menu to return to the main menu.



CHAPTER 2: PORTRAIT MODE

2.1 CONFIGURATION BASED

Black Box recommends pre-rotating content before adding it to the ICC. If this is not possible, then orientation can be set through display and configuration.

1. Click the Manage Players  icon in the top right hand corner of the ICC. You can also reach this page by navigating Home > Manage Players.

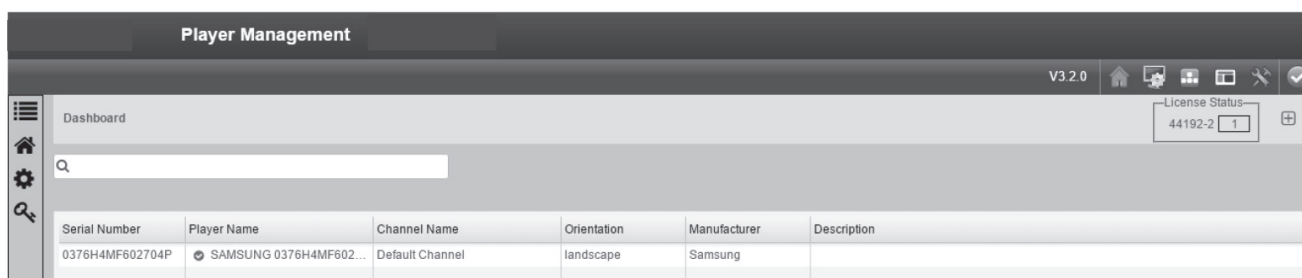




FIGURE 7.

2. Click the Settings  icon on the left-hand side.
3. Select your configuration from the list.
4. Click on the Edit  button and change the orientation of the screen through the drop-down menu in the pop-up box.

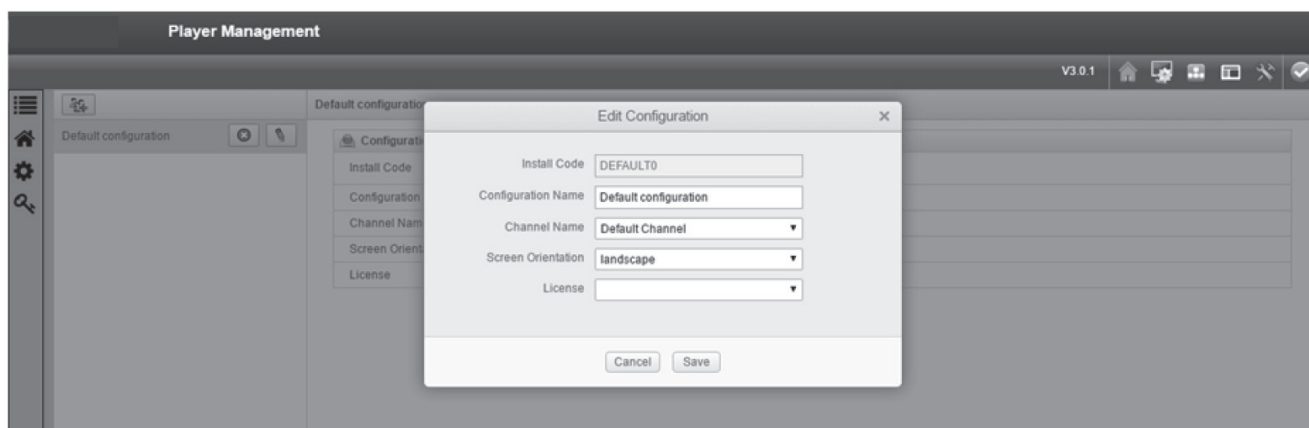



FIGURE 8.

5. Select Save.

NOTE: The display orientation takes precedence over the configuration orientation.

CHAPTER 2: PORTRAIT MODE

2.2 DISPLAY BASED

1. Click the Manage Players  icon in the top right hand corner of the ICC. You can also reach this page by navigating Home > Manage Players.
2. Select your player from the list.
3. Click on the Edit button on the right hand side.

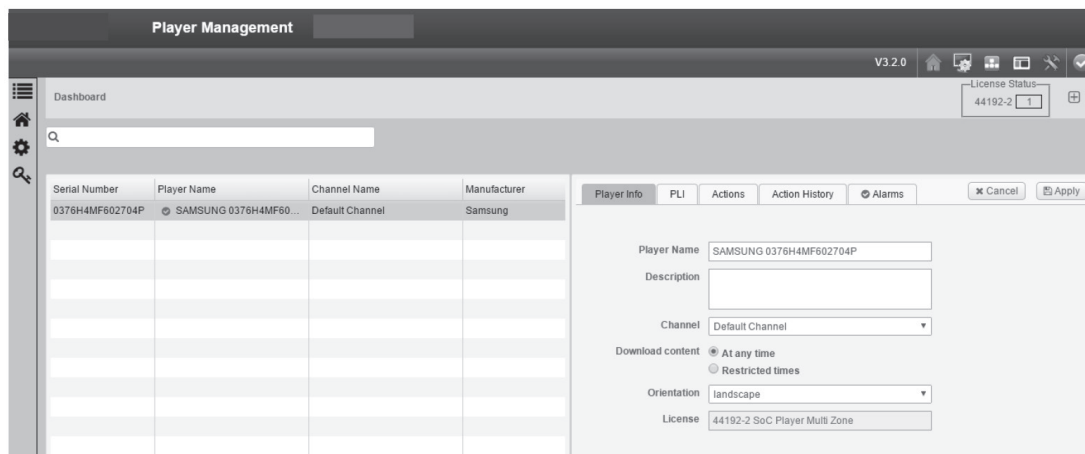


FIGURE 9.

4. The player information will become editable.
5. Select the orientation from the drop-down menu.
6. Click Apply.

NOTE: The display orientation takes precedence over the configuration orientation.

CHAPTER 3: GAPLESS PLAYBACK

3.1 CONFIGURATION

Gapless playback is constrained on Samsung players and content must meet the following specifications to play in gapless mode.

- ◆ The playlist must consist of all videos. Adding any other playlist item will cause it to not run gapless. Therefore, all images must be converted to videos.
- ◆ Each video must play until finished.
- ◆ All videos must have:
 - The same aspect ratio.
 - The same video encoding.
 - The same audio encoding.
 - Mp4 format.


NOTE: Folders with videos are supported subject to these constraints.



CHAPTER 4: FULL SCREEN VIDEO

Full screen video is most easily accomplished by creating a layout with a single full screen video zone. However, you can also use custom position and size following the steps below. This is useful for when your layout is multi-zoned and you want a single item playing full screen and for each other item playing only in that zone.

4.1 CUSTOM POSITION AND SIZE

1. Select the item you wish to go full screen.
2. Click on the item's Edit  button.

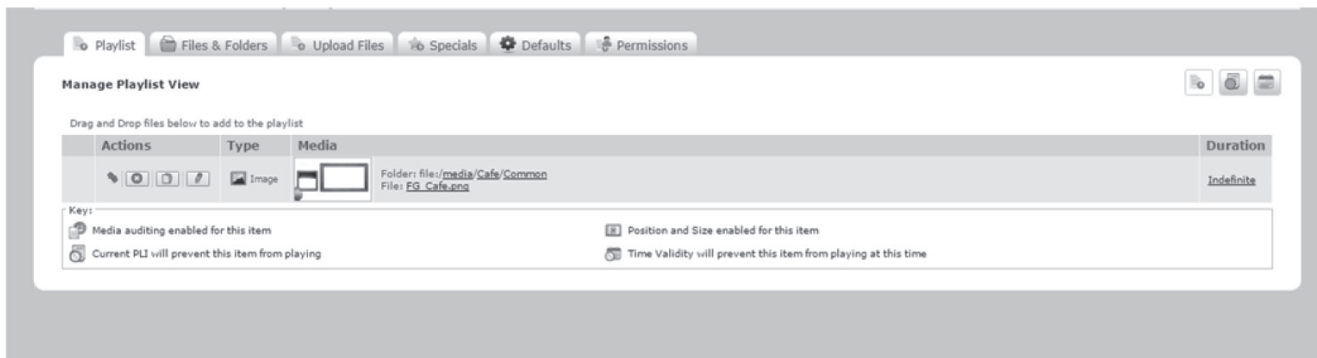


FIGURE 10.

3. Click on the Advanced tab.
4. Select Use custom position and size.
5. Set the left and top margins to 0 pixels.
6. Set the height to 100%.
7. Set the width to 100%.

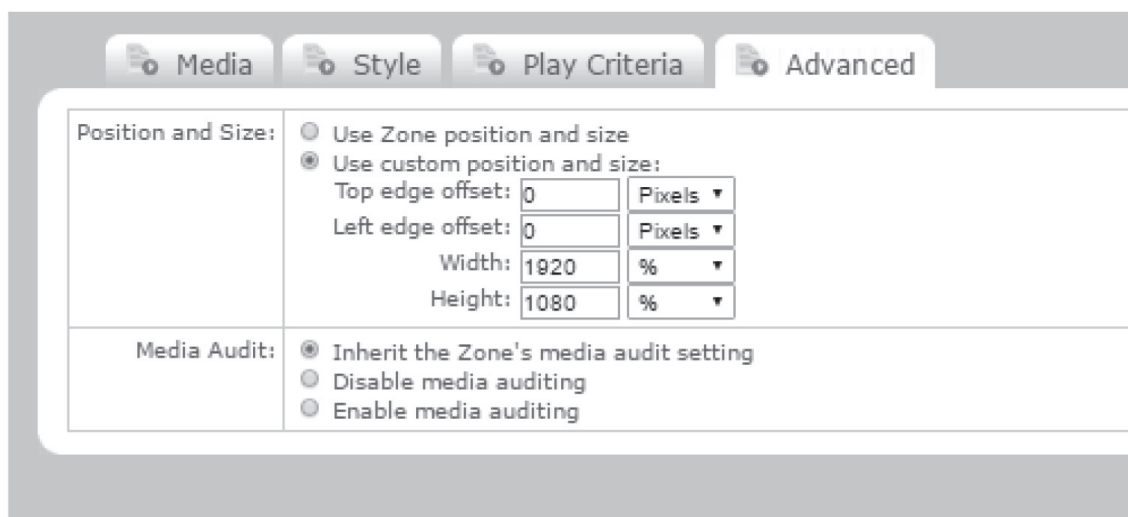


FIGURE 11.

CHAPTER 5: RECOMMENDED SOFTWARE VERSION

1. Press the Menu button on the remote.
2. Scroll down to Support.
3. Navigate to Software Update.
4. The current version will be displayed on the right hand side.
5. Firmware updates can be found at blackbox.com, by calling Technical Support at 877-877-2269, or by emailing info@blackbox.com.



CHAPTER 6: FACTORY RESET

1. Press Home on the remote.
2. Select Change URL and change it to \$DEL.
3. Press Done and launch URL.
4. Now press Home again and change your URL back to your ICC URL.
5. Relaunch player.



CHAPTER 7: SUPPORTED FORMATS

This section lists all the streaming products and media file formats supported on Samsung SSSP2.

7.1 VIDEO AND AUDIO

TABLE 7-1. SUPPORTED VIDEO AND AUDIO FORMATS

FILE EXTENSION	CONTAINER	VIDEO CODEC	RESOLUTION	FRAME RATE (FPS)	BIT RATE (MBPS)	AUDIO CODEC
*.avi	AVI	Motion JPEG				
*.mkv		H.264				
*.asf	MKV	BP/MP/HP				
*.wmv		Divx 3.11/4/5/6				
*.mp4	ASF	MPEG4-SP/ASP				AC3
*.mov	MP4	Window Media				
*.3gp	3GP	Video v9 (VC1)	1920 X 1080	FHD: MAX 30	30	LPCM
*.vro	MOV	MVC				
*.mpg	FLV	MPEG2	1280 X 720	HD: MAX 60		ADPCM (IMA, MS)
*.mpeg	VRO	MPEG1				
*.ts	VOB	Microsoft MPEG-4		MAX 30		AAC
*.tp	PS	v1, v2, v3				
*.trp	TS	H 263 Sorrenson				HE-AAC
*.flv	SVAF	Window Media				
*.vob		Video v7 (WMV1),				WMA
*.svi		v8 (WMV2)				
*.m2ts		VP6				DD+
*.mts						
*.divx						MPEG (MP3)
*.webm	WEBM	VP8	1920 X 1080	6 –30	20	DTS (Core, LBR)
*.rmvb	RMVB	RV8/9/10 (RV30/40)	1920 x 1080	6–30	20	G.711 (ALaw, μ -Law)
						Vorbis
						RealAudio 6



CHAPTER 8: KNOWN LIMITATIONS

- ◆ NTB level gapless playback - this is a known limitation with Samsung players. The gapless playback will not be to the same level as the NTB and requires the configuration detailed in this document to be met. If the player cannot play one of the videos then the player will fall back to playing the videos non-gapless.

NOTE: SSSP2 Samsung players cannot support gapless playback in portrait configurations. Gapless playback will only work in landscape.

- ◆ Movies/images - use media of a similar size to the zone as otherwise scaling may cause loss of quality.
- ◆ GIFs - avoid using multiple animated GIFs as these can cause playback issues.

8.1 SAMSUNG LIMITATIONS

- ◆ Some codes may not be playable if there are errors in contents.
- ◆ Media is not able to be played if the file is corrupted or information in the container is wrong.
- ◆ Content that has higher bitrate/frame rate than specifications may have stalling of video or audio during playback.
- ◆ Seek (jump) function is not supported if the index table is corrupted.
- ◆ Network streaming contents may not be played smoothly depending on network status.
- ◆ Some USB/digital camera devices may not be compatible with the player.
- ◆ RMVB is supported only in China, Hong Kong target device.
- ◆ HEVC codec is supported only in MKV/MP4/TS container.

8.1.1 VIDEO DECODER

- ◆ H.264 FHD: supports to level 4.1 (FMO/ASO.RS are not supported).
- ◆ VC1 AP L4 is not supported.
- ◆ Except WMV v7, v8, MSMPEG4 v3, MVC, VP6:
Below 1280 x 720: 60 frame max.
Above 1280 x 720: 30 frame max.
- ◆ GMC 2 or higher are not supported.
- ◆ SVAF top/bottom, side by side, left/right view sequence type (2 ES) are supported.
- ◆ Only BD MVC Spec is supported.

8.1.2 AUDIO DECODER

- ◆ WMA: supports to 10 Pro 5.1 channel.
- ◆ WMA lossless audio: not supported. Supported to M2 profile.
- ◆ China, Hong Kong target device doesn't support RealAudio 10 lossless.
- ◆ QCELP, AMR, NB/WB are not supported.
- ◆ Vorbis: supports to 5.1 ch.
- ◆ DD+: supported to 5.1 ch.
- ◆ DTS LBR codec is supported only in MKV/MP4/TS container.

TABLE 9-1. ZONE LIMITS FOR BEST PERFORMANCE

CONTENT	LIMIT
Movies*	1
HTML	1
HTML Clock	1
Scrolling Text	2
Static Text	Unlimited
Images	Unlimited

* Including HDMI input



APPENDIX: DISCLAIMER/TRADEMARKS

A.1 DISCLAIMER

Black Box Corporation shall not be liable for damages of any kind, including, but not limited to, punitive, consequential or cost of cover damages, resulting from any errors in the product information or specifications set forth in this document and Black Box Corporation may revise this document at any time without notice.

A.2 TRADEMARKS USED IN THIS MANUAL

Black Box and the Black Box logo type and mark are registered trademarks of Black Box Corporation.

Any other trademarks mentioned in this manual are acknowledged to be the property of the trademark owners.



**NEED HELP?
LEAVE THE TECH TO US**

**LIVE 24/7
TECHNICAL
SUPPORT**

1.877.877.2269

