



WP-T1GW
WP-T1GB

WP-T2GW
WP-T2GB

Table Top Wall Plate Box

Quick Install Guide

Single- or double-gang wall plate boxes available in black or white.



Your Table Top Wall Plate Box package includes:

- (1) Table top wall plate box, (single/dual) gang
- (2) Rubber cable grommets
- (4) Adhesive rubber feet
- (4) #6-18 wood screws

If anything is missing or damaged, please contact Black Box Technical Support at 877-877-2269 or info@blackbox.com.

Contact Information

Order toll-free in the U.S. or for FREE 24/7 technical support:
Call 877-877-BBOX (outside U.S. call 724-746-5500)
www.blackbox.com • info@blackbox.com

Table Top Wall Plate Box Quick Install Guide

Trademarks Used in this Manual

Black Box and the Double Diamond logo are registered trademarks of BB Technologies, Inc.

Any other trademarks mentioned in this manual are acknowledged to be the property of the trademark owners.

Table of Contents

1. Tools You Will Need	3
2. Assembling and Installing the Table Top Wall Plate Box.....	4
2.1 Removing the Punch-Out and Installing the Grommet.....	4
2.2 Securing the Table Top Wall Plate Box to the Table	6
3. Installing the Device.....	9

1. Tools You Will Need

Required for all installations:

- #1 Phillips screwdriver
- #2 Phillips screwdriver

Required for permanent installations only:

- 3/32" drill bit
- Electric drill
- #2 Phillips driver

Table Top Wall Plate Box Quick Install Guide

2. Assembling and Installing the Table Top Wall Plate Box

2.1 Removing the Punch-Out and Installing the Grommet

Follow these steps:

STEP 1: To remove punch-out, press firmly on one side of the punch-out disk.



Figure 2-1. Punch-out disk.

STEP 2: Rotate the punch-out disk until the tabs break. Remove the disk.



Figure 2-2. Rotate the punch-out disk.

Table Top Wall Plate Box Quick Install Guide

STEP 3: Beginning at one point, seat the seam of the grommet onto the edge of the hole. Work around the edge until the seam is fully seated.



Figure 2-3. Seat the grommet.

STEP 4: Grommet installation is complete.



Figure 2-3. Completed grommet installation.

Table Top Wall Plate Box Quick Install Guide

2.2 Securing the Table Top Wall Plate Box to the Table

STEP 1: Using a #1 Phillips screwdriver, remove all EIGHT (8) of the #2-56 screws and set them aside.

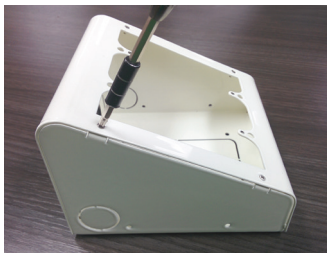


Figure 2-5. Remove screws.

STEP 2: Separate the top panel from the base plate.

STEP 3: Use the base plate mounting holes as a guide to transfer the hole location to the desktop.



Figure 2-6. Transfer the hole location to the desktop.

Table Top Wall Plate Box Quick Install Guide

STEP 4: Using a 3/32" drill bit, drill down 0.75" into the wood desktop at the marked mounting hole locations.

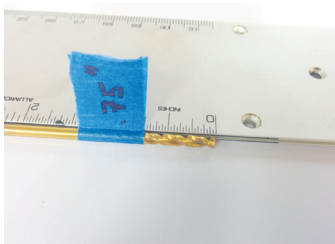


Figure 2-6. Drill the marked mounting holes into the desktop.

STEP 5: Using a #2 Phillips driver bit and a drill, secure the base plate to the desktop using FOUR (4) #6 wood screws

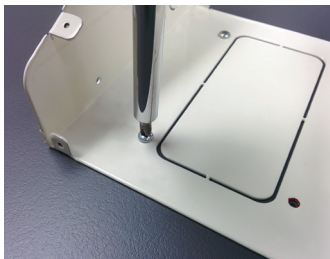


Figure 2-7. Secure the base plate to the desktop.

Table Top Wall Plate Box Quick Install Guide

STEP 6: Complete the installation by re-attaching the top panel to the base plate using the EIGHT (8) #2-56 screws previously removed.



Figure 2-8. Reattach the base plate to the desktop.

Table Top Wall Plate Box Quick Install Guide

3. Installing the Device

STEP 1: Connect all device cables (Ethernet, power, etc.) and route the cables through the rear grommet holes.

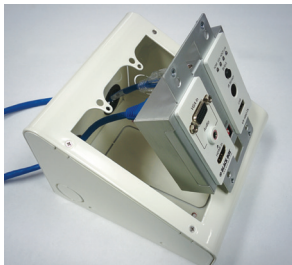


Figure 3-1. Connect and route device cables.

STEP 2: Secure the device to the top plate using TWO to FOUR (2-4) #6-32 machine screws (depending on single or double gang device).

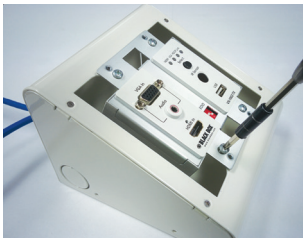


Figure 3-2. Secure the device to the top plate.

Table Top Wall Plate Box Quick Install Guide

STEP 3: Secure the faceplate to the device using TWO to FOUR (2-4) machine screws provided with the device.



Figure 3-3. Secure the faceplate to the device.

STEP 4: Installation is complete.



Figure 3-4. Completed installation.

Black Box Tech Support: FREE! Live. 24/7.

Tech support the
way it should be.



Great tech support is just 60 seconds away
at 877-877-2269 or blackbox.com.



About Black Box

Black Box provides an extensive range of networking and infrastructure products. You'll find everything from cabinets and racks and power and surge protection products to media converters and Ethernet switches all supported by free, live 24/7 Tech support available in 60 seconds or less.

© Copyright 2016. Black Box Corporation. All rights reserved. Black Box® and the Double Diamond logo are registered trademarks of BB Technologies, Inc. Any third-party trademarks appearing in this white paper are acknowledged to be the property of their respective owners.

wp-t1gw_qig_rev1

877-877-2269 | blackbox.com