

Product Data Sheet

Rackmount Shelves, Wallmount Shelves, Keyboard/Mouse Trays

Overview

Black Box offers a variety of 1U, 2U, and 3U high shelves that fit 19" EIA-310 standard racks and cabinets. Features and photos of each available shelf are included in this datasheet, followed by a comparison chart describing the specifics for each shelf. Also included are details for our two wallmount shelves, and our keyboard trays. All of these accessories are guaranteed for life.

Features

- Compatible with 19" EIA-310 standard racks and cabinets.
- Guaranteed for life!
- Shelves range from 35 lb. to over 200 lb. weight capacity.
- Fixed and Telescoping mounting, slide operated, solid or vented, steel or aluminum.

Tool-less Telescoping Shelf 19.5" - 33.25"D (RM047-R2) or 31" - 45.3"D (RM049-R2)

- Easy installation—no tools required.
- Supports up to 150 pounds.
- For use on standard 19-inch rails with square M6 holes.
- Two sizes to accommodate most cabinet depths.
- Adjusts to fit your cabinet so there's no empty space at the back for your equipment to fall through.
- Cable slots and pre-punched D-ring holes.
- Vented for air circulation.



RM047-R2



RM049-R2

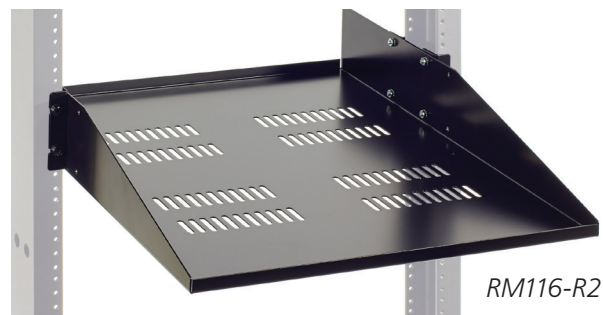
Solid Heavy-Duty Equipment Shelf (RM114-R2)

- Mount on standard 19" equipment racks with 3" or 6" channels.
- Holds up to 150 pounds (60 kg) so you can store heavy equipment in one convenient place.
- Constructed of 16-gauge steel.
- Includes mounting hardware.
- Mounting depth within rack is adjustable.
- Measures 3.5"H x 17.4"W x 21.75"D (48.9 x 44.9 x 55.2 cm).



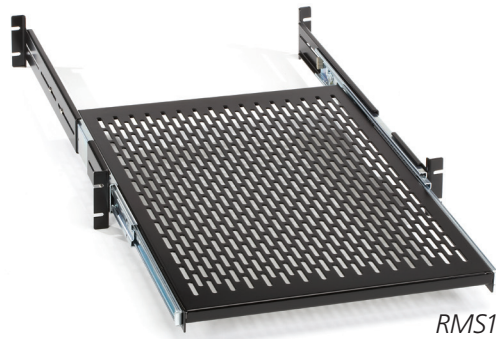
Vented Heavy-Duty Equipment Shelf (RM116-R2)

- Mount on standard 19" equipment racks with 3" or 6" channels.
- Holds up to 150 pounds (60 kg) so you can store heavy equipment in one convenient place.
- Constructed of 16-gauge steel.
- Includes mounting hardware. Mounting depth within rack is adjustable.
- Measures 3.5"H x 17.4"W x 21.75"D (48.9 x 44.2 x 55.2 cm).



Rackmount Sliding Vented 4-Point Shelf, 19" Rails (RMS1924S)

- Holds equipment weighing up to 50 pounds.
- Shelf slides out for easy access.
- Mounts on 19" rails.
- 24" deep.
- Vented for improved air circulation.
- Mounting hardware included:
 - (8) 10-32 cup-head screws
 - (8) 12-24 cup-head screws



RMS1924S

Heavy-Duty Sliding Adjustable Shelf, 17-1/2"W x 29"D, 125-lb. Capacity (RMT411)

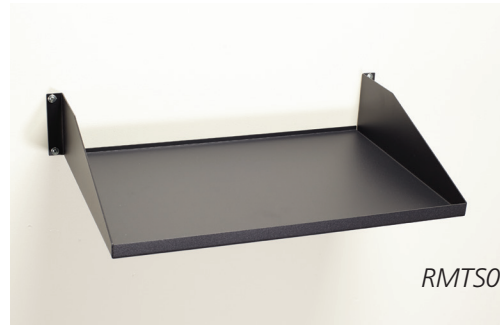
- Shelf slides out to provide easy access to your servers and other equipment.
- Use this 29" deep shelf with 19" rails.
- Holds up to 125 pounds.
- Works with Elite II Server and Elite Server-Mount Data Cabinets and other cabinets.



RMT411

Heavy-Duty Rackmount Shelf - 2U, Solid, Fixed, 100-lb. Capacity (RMTS00)

- Holds extra IT equipment and accessories in IT racks and cabinets.
- Mounts on standard 19" EIA-310 equipment racks and cabinets.
- Uses 2U of rack space.
- Holds up to 100 lbs (45 kg).
- Other sizes and configurations available.
- 16 AWG cold-rolled steel.



RMTS00

Rackmount Solid Fixed Shelf - 35-lb. Capacity (RMTS01)

- Arrange your servers or other equipment on shelves installed in a cabinet.
- Weight capacity of 35 pounds.
- Use 3U of rack space.
- Mounts on EIA standard 19" EIA-310 rails.
- Other sizes and configurations available.
- 18 AWG cold-rolled steel.



RMTS01

Rackmount Vented Fixed Shelf - 35-lb. Capacity (RMTS02)

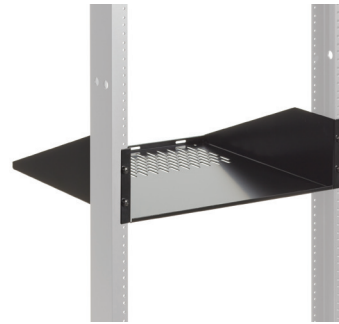
- Steel construction.
- Mount on EIA standard 19" rails.
- Use 3U of rack space.
- 18 AWG cold-rolled steel.
- 12" deep.



RMTS02

Rackmount Vented Fixed Shelf - 60-lb. Capacity (RMTS03)

- Weight capacity of 60 pounds.
- Steel construction.
- Mount on EIA standard 19" rails.
- Use 3U of rack space.
- 16 AWG cold-rolled steel.
- 17.7" deep.



RMTS03

Rackmount Solid Fixed Shelf - 12" Deep, Black, 50-lb. Capacity (RMTS04)

- Weight capacity of 50 pounds.
- Mount on EIA standard 19" rails.
- Use 3U of rack space.
- 16 AWG cold-rolled steel.



RMTS04

Rackmount Vented Sliding Shelf - 50-lb. Capacity (RMTS06B)

- Weight capacity of 50 pounds.
- Constructed of 18-gauge steel.
- Mount on EIA standard 19" rails.
- 18" deep.



RMTS06B

Two-Part Rackmount Server Shelf for 19" Rails, 10"D, Black (RMTS07-19)

- Two 10"D shelves included.
- Mount two shelves back-to-back to create a 20-inch deep shelving area to hold desktop- or tower-style CPUs.
- Weight capacity of 200 pounds.
- Constructed of 16-gauge steel.
- Mount on EIA standard 19" rails.



RMTS07-19

Vented Center-Weight Shelf - 18.5"D, Black, 50-lb. Capacity (RMTS08)

- Weight capacity of 50 pounds.
- Constructed of 16-gauge steel.
- Vented for improved air circulation.
- Mounts on EIA standard 19" rails.
- Fits in 2U of rack space.

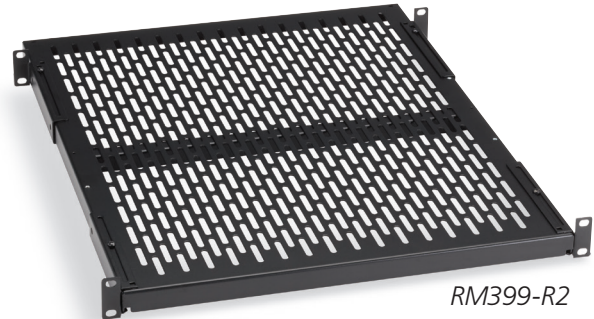


RMTS08

Shelves for Elite Series Cabinets begin here...

Fixed Vented Server Shelf, 22.25"D, for 19" Rails (RM399-R2)

- Supports up to 200 pounds.
- For 19" rails.
- Mounts in 4-post racks and enclosures.
- Also available in 27 1/4" and 30" depths.
- For Elite™ Series Cabinets only.



RM399-R2

Fixed Vented Server Shelf, 27.25"D, for 19" Rails (RM403-R2)

- Supports up to 150 pounds.
- For 19" rails.
- Mount anywhere in your cabinet in a four-point pattern.
- Also available in 22 1/4" and 30" depths.
- For Elite Series Cabinets only.



RM403-R2

Fixed Vented Server Shelf, 30"D, for 19" Rails (RM410-R2)

- Supports up to 150 pounds.
- Mount anywhere in your cabinet in a four-point pattern.
- Also available in 22 1/4" and 27 1/4" depths.
- For Elite Series Cabinets only.



RM410-R2

Wallmount Shelf is shown below...

Vented Wallmount Shelf (RMT964)

- Weight capacity is 200 pounds.
- Fully welded construction; 16-gauge steel.
- Shelf bottom includes 1/2" and 3/4" electrical knockouts for cables.
- Vented bottom enables air to circulate.
- Use to wallmount non-rackmount equipment, such as surveillance monitors and other security components.
- Measures 14"H x 20.5"W x 17"D (35.6 x 52.1 x 43.2 cm)



RMT964

Keyboard/Mouse Trays begin here...

19" Sliding Pivoting Tray with Mouse Tray, 20.6"W x 9.5"D (RM385)

- Slide keyboard in sideways for storage.
- To use, simply pull out the keyboard and pivot it into position.
- Accommodates keyboards wider than your rack.
- Features adjustable four-point 19" EIA mounting.
- Mouse tray features non-skid surface for easy rolling, pointing, and clicking.
- Use the mouse tray on the left or right.
- Cushioned wrist rest for more comfortable use.
- Holds a keyboard up to 20.5" wide.
- Slides out up to 19".
- Provides the ideal solution for keyboards that are too wide for your cabinet or rack.
- Mounts on EIA standard 19" rails.
- Measures 3.5"H (2U) x 20.625"W x 9.5"D (8.9 x 52.38 x 24.1 cm).



RM385

19" Keyboard Tray/Monitor Shelf (RM028)

- A single multilevel shelf enables you to keep your keyboard, monitor, and mouse within a two-post 19" rack.
- Durable 16-gauge steel with black powder paint finish.
- Occupies 4U of rack space.
- Monitor shelf holds up to 100 pounds and is 13.3" deep.
- Keyboard tray slides out an additional 7" and holds a full-size keyboard. When you're done working, simply slide it back in under the monitor shelf.
- Slide-out mouse tray is attached to the keyboard tray.
- Cantilevered monitor shelf extends 10.5" beyond the front of the rack.
- Mounts to the front and back surfaces of both standard 3" rails in a two-post open frame rack.



RM028

Rackmount Shelves, Wallmount Shelves, Keyboard/Mouse Trays Data Sheet

Specifications

Comparison Chart: Standard Shelves

Part Number	Weight Capacity	Compatible with...	Maximum Depth	Rack Units	Solid or Vented	Fixed or Sliding	Special Features	Construction
RM047-R2	150 lb. (68.2 kg)	19-inch rails with square M6 holes	19.5" - 33.25"	2U	Vented	Telescoping	Tool-less	14-gauge steel, black finish
RM049-R2	150 lb. (68.2 kg)	19-inch rails with square M6 holes	31" - 45.3"	2U	Vented	Telescoping	Tool-less	14-gauge steel, black finish
RM114-R2	150 lb. (68.2 kg)	19-inch racks with 3" or 6" channels	21.75"	1U	Solid	Fixed	Heavy-duty	16-gauge steel, black finish
RM116-R2	150 lb. (68.2 kg)	19-inch racks with 3" or 6" channels	21.75"	1U	Vented	Fixed	Heavy-duty	16-gauge steel, black finish
RMS1924S	50 lb. (22.7 kg)	19-inch rails	24"	2U	Vented	Sliding	Shelf slides out 18"	Steel, black finish
RMT411	125 lb. (56.8 kg)	19" rails	29"		Vented	Sliding, Adjustable	Heavy-Duty	14-gauge steel, black finish
RMTS00	100 lb. (45 kg)	19" racks and cabinets	12.2"	2U	Solid	Fixed	Heavy-Duty	16-gauge steel, black finish
RMTS01	35 lb. (15.9 kg)	19" rails	12"	3U	Solid	Fixed	Single-sided	18-gauge steel, black finish
RMTS02	35 lb. (15.9 kg)	19" rails	12"	3U	Vented	Fixed	Single-sided	18-gauge steel, black finish
RMTS03	60 lb. (27.2 kg)	19" rails	17.7"	3U	Vented	Fixed	Single-sided	18-gauge steel, black finish
RMTS04	50 lb. (22.7 kg)	19" rails	12"	3U	Solid	Fixed	Heavy-Duty	18-gauge steel, black finish
RMTS06B	50 lb. (22.7 kg)	19" rails	18"	3U	Vented	Sliding	Shelf slides out 18.25"	18-gauge steel, black finish
RMTS07-19	200 lb. (90.9 kg)	19" rails	20"	3U	Solid	Fixed	(2) 10" shelves hold desktop or tower-style CPUs	16-gauge steel, black finish
RMTS08	50 lb. (22.7 kg)	19" rails	18.5"	2U	Vented	Fixed	Center-weight	16-gauge steel, black finish

Rackmount Shelves, Wallmount Shelves, Keyboard/Mouse Trays Data Sheet

Comparison Chart: Shelves for Elite™ Series Cabinets

Part Number	Weight Capacity	Compatible with...	Maximum Depth	Rack Units	Solid or Vented	Fixed or Sliding	Special Features	Construction
RM399-R2	200 lb. (90.9 kg)	19" rails in 4-post racks and enclosures	22.25"	1U	Vented	Fixed	Mounts servers in 4-post racks and enclosures	Steel, black finish
RM403-R2	150 lb. (68.2 kg)	19" rails in 4-post racks and enclosures	27.25"	1U	Vented	Fixed	Mounts servers in 4-post racks and enclosures	Steel, black finish
RM410-R2	150 lb. (68.2 kg)	19" rails in 4-post racks and enclosures	30"	1U	Vented	Fixed	Mounts servers in 4-post racks and enclosures	Steel, black finish

Comparison Chart: Wallmount Shelf

Part Number	Weight Capacity	Compatible with...	Dimensions	Solid or Vented	Fixed or Sliding	Special Features	Construction
RMT964	200 lb. (90.9 kg)	Mounts on wall studs	14"H x 20.5"W x 17"D (35.6 x 52.1 x 43.2 cm)	1/2" and 3/4" knockouts for cables	Fixed	Mounts directly to wall	16-gauge welded steel

Comparison Chart: Keyboard Trays

Part Number	Weight Capacity	Compatible with...	Rack Units	Maximum Width of Keyboard or Shelf Depth	Includes Mouse Tray	Fixed or Sliding	Special Features
RM385	90 lb. (40.9 kg)	19" racks	2U	20.5"W	Left or right	Pull-out and pivoting	Holds 20.5"W keyboard, slides out adjustable four-point 19" EIA mounting, has cushioned wrist rest
RM028	100 lb. (45.5 kg)	2-post open rack with standard 3" rails	4U	13.3"D	Slide-out	Sliding	Multilevel shelf includes keyboard tray and slide-out mouse tray

Rackmount Shelves, Wallmount Shelves, Keyboard/Mouse Trays Data Sheet

Ordering Information

Item	Code
Standard Cabinet/Rack Shelves	
Tool-less Shelves	
For Performance Plus Cabinets	
M6 Rails	
23.6" - 35.4"D	RM047-R2
31" - 45.3"D	RM049-R2
Heavy-Duty Equipment Shelf	
Solid	RM114-R2
Vented	RM116-R2
Rackmount 4-Point Shelf	
19" Rails	
Sliding, Vented	RMS1924S
Heavy-Duty Shelf	
Sliding, Vented, Adjustable, 125-lb. Capacity	RMT411
Fixed	
Solid	
100-lb. Capacity	RMTS00
35-lb. Capacity	RMTS01
50-lb. Capacity, 12" Deep	RMTS04
Fixed	
Vented	
35-lb. Capacity	RMTS02
60-lb. Capacity	RMTS03
Sliding	
Vented	
50-lb. Capacity	RMTS06B
Vented Center-Weight Shelf, 18.5"D, Black, 50-lb. Capacity	RMTS08
Elite Series Cabinet Shelves	
Fixed	
Vented	
19" Rails	
200-lb. Capacity, 22.25"D	RM399-R2
150-lb. Capacity, 27.25"D	RM403-R2
150-lb. Capacity, 30"D	RM410-R2
Wallmount Shelf	
200-lb. Capacity, 17"D	RMT964
Keyboard Trays	
19" Sliding, Pivoting	
with Side Mouse Tray, 9.5"D	RM385
Keyboard Tray/Monitor Shelf	
19" Multi-level	
with Side Mouse Tray	RM028

Disclaimer:

Black Box Network Services shall not be liable for damages of any kind, including, but not limited to, punitive, consequential or cost of cover damages, resulting from any errors in the product information or specifications set forth in this document and Black Box Network Services may revise this document at any time without notice.

About Black Box:

Black Box is a leading technology product solutions provider that helps customers build, manage, optimize, and secure their networks. The Black Box quality management system is ISO 9001:2008 certified, and the company has received numerous industry recognitions. Black Box provides its customers with free, 24/7 pre- and post-sales technical support. The Black Box catalog and Web site offer an extensive range of infrastructure products including Cabling, Cabinets & Racks, Data Center Cooling Solutions, Power & Surge Protection, and Environmental Monitoring.