



C6BU-Z-SB-GY-xxx  
C6BU-Z-SB-YL-xxx  
C6BU-Z-SB-PU-xxx

C6BU-Z-SB-BL-xxx  
C6BU-Z-SB-GN-xxx

C6BU-Z-SB-RD-xxx  
C6BU-Z-SB-BK-xxx

## Product Data Sheet

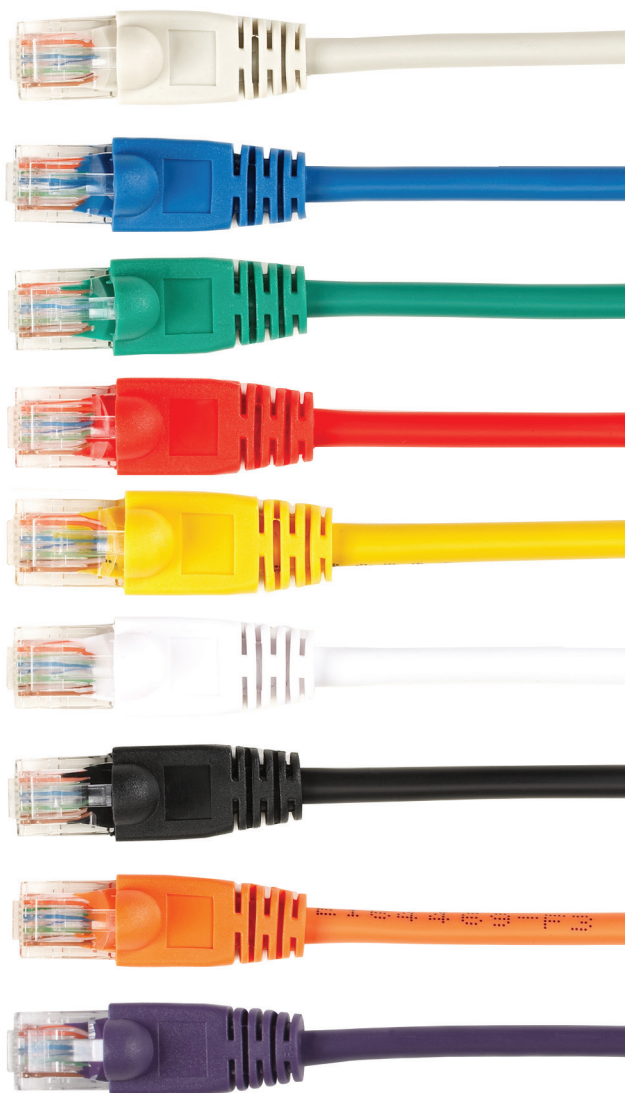
# Black Box Connect CAT6 Patch Cables — Snagless Boots

### Features

- 100% Copper Conductors
- Moulded Snagless Boots
- Meets or exceeds CAT6 specifications
- U/UTP Unshielded Twisted Pair Construction
- Low Smoke Zero Halogen
- Tested and verified with channel solution

### General Specifications

Connectors	
Material	RJ-45 contacts, gold flush
Housing	Moulded snag proof with strain relief
Conductors	
Material	Stranded copper
Size	26 AWG
Construction	7 / 0.152 ± 0.008mm
Insulation	
Material	HDPE
Thickness	min at any point 0.2mm, max average 0.25mm
Diameter	0.82 ± 0.06mm
Sheath	
Material	LSOH IPC4101-A. IEC61189-2C12
Flammability	IEC60332-2 CATC
Diameter	5.2 ± 0.2mm
Tensile Strength	min 0.917 kg/mm <sup>2</sup>
Electrical Characteristics	
Spark Test	2000 ± 250V AC
Dielectric Strength	2500V DC / 3 seconds
Insulation Resistance	min 150 Mohms / km
Resistance	14.07 ohms / 100m @ 20°C
Capacitance	max 330 pF / 100m
Mutual Capacitance	max 5600 pF / 100m
Impedance	64 kHz: 125 ohms ± 20% 1~250 MHz: 100 ohms ± 15%



# Black Box Connect CAT6 UTP LZ0H Patch Cables, snagless boots

## Attenuation and Near End Cross-talk (NEXT)

Attenuation & NEXT	Attenuation max. (db/100m at 20°C)	NEXT db min	Power Sum (dB) min.
1 MHz	--	66.0*	64.0*
4 MHz	4.5*	65.3*	63.3*
10 MHz	7.1*	59.3*	57.3*
16 MHz	9.1*	56.2*	54.2*
20 MHz	10.2*	54.8*	52.8*
31.25 MHz	12.8*	51.9*	49.9*
62.5 MHz	18.5*	47.4*	45.4*
100 MHz	23.8*	44.3*	42.3*
155 MHz	30.4*	41.4*	39.4*
200 MHz	34.8*	39.8*	37.8*
250 MHz	39.4*	38.3*	36.3*

NOTE: Asterisk (\*) values are information only.

The minimum NEXT coupling loss for any pair combination at room temperature is greater than the value determined using the formula:  
 $NEXT (f \text{ MHz}) \geq NEXT (0.772) - 15 \log_{10} (f \text{ MHz} / 0.772)$ .

## Black Box Connect CAT6 UTP LZ0H Patch Cables, snagless boots

## Black Box Connect CAT6 UTP LZ0H Patch Cables, snagless boots

Length	Color	Code
0.5 m	gray	<b>C6BU-Z-SB-GY-00M5</b>
1 m	gray	<b>C6BU-Z-SB-GY-01M</b>
2 m	gray	<b>C6BU-Z-SB-GY-02M</b>
3 m	gray	<b>C6BU-Z-SB-GY-03M</b>
5 m	gray	<b>C6BU-Z-SB-GY-05M</b>
7.5 m	gray	<b>C6BU-Z-SB-GY-07M5</b>
10 m	gray	<b>C6BU-Z-SB-GY-10M</b>
0.5 m	blue	<b>C6BU-Z-SB-BL-00M5</b>
1 m	blue	<b>C6BU-Z-SB-BL-01M</b>
2 m	blue	<b>C6BU-Z-SB-BL-02M</b>
3 m	blue	<b>C6BU-Z-SB-BL-03M</b>
5 m	blue	<b>C6BU-Z-SB-BL-05M</b>
7.5 m	blue	<b>C6BU-Z-SB-BL-07M5</b>
10 m	blue	<b>C6BU-Z-SB-BL-10M</b>
0.5 m	black	<b>C6BU-Z-SB-BK-00M5</b>
1 m	black	<b>C6BU-Z-SB-BK-01M</b>
2 m	black	<b>C6BU-Z-SB-BK-02M</b>
3 m	black	<b>C6BU-Z-SB-BK-03M</b>
5 m	black	<b>C6BU-Z-SB-BK-05M</b>
7.5 m	black	<b>C6BU-Z-SB-BK-07M5</b>
10 m	black	<b>C6BU-Z-SB-BK-10M</b>
0.5 m	green	<b>C6BU-Z-SB-GN-00M5</b>
1 m	green	<b>C6BU-Z-SB-GN-01M</b>
2 m	green	<b>C6BU-Z-SB-GN-02M</b>
3 m	green	<b>C6BU-Z-SB-GN-03M</b>
5 m	green	<b>C6BU-Z-SB-GN-05M</b>
7.5 m	green	<b>C6BU-Z-SB-GN-07M5</b>
10 m	green	<b>C6BU-Z-SB-GN-10M</b>

Length	Color	Code
0.5 m	red	<b>C6BU-Z-SB-RD-00M5</b>
1 m	red	<b>C6BU-Z-SB-RD-01M</b>
2 m	red	<b>C6BU-Z-SB-RD-02M</b>
3 m	red	<b>C6BU-Z-SB-RD-03M</b>
5 m	red	<b>C6BU-Z-SB-RD-05M</b>
7.5 m	red	<b>C6BU-Z-SB-RD-07M5</b>
10 m	red	<b>C6BU-Z-SB-RD-10M</b>
0.5 m	yellow	<b>C6BU-Z-SB-YL-00M5</b>
1 m	yellow	<b>C6BU-Z-SB-YL-01M</b>
2 m	yellow	<b>C6BU-Z-SB-YL-02M</b>
3 m	yellow	<b>C6BU-Z-SB-YL-03M</b>
5 m	yellow	<b>C6BU-Z-SB-YL-05M</b>
7.5 m	yellow	<b>C6BU-Z-SB-YL-07M5</b>
10 m	yellow	<b>C6BU-Z-SB-YL-10M</b>
0.5 m	purple	<b>C6BU-Z-SB-PU-00M5</b>
1 m	purple	<b>C6BU-Z-SB-PU-01M</b>
2 m	purple	<b>C6BU-Z-SB-PU-02M</b>
3 m	purple	<b>C6BU-Z-SB-PU-03M</b>
5 m	purple	<b>C6BU-Z-SB-PU-05M</b>
7.5 m	purple	<b>C6BU-Z-SB-PU-07M5</b>
10 m	purple	<b>C6BU-Z-SB-PU-10M</b>