



# NaviTEK NT

Copper and Fibre Network Troubleshooter

Proof of Performance

# NaviTEK NT

## Network Troubleshooter

The NaviTEK NT is a network tester for troubleshooting and maintenance of active and passive copper and fibre networks. Incorporating an improved graphical interface NaviTEK NT allows network technicians to pinpoint and solve network connectivity issues faster than ever before. Subsequently, tests can be saved as pdf reports and shared with colleagues and clients using the free AnyWare™ app.

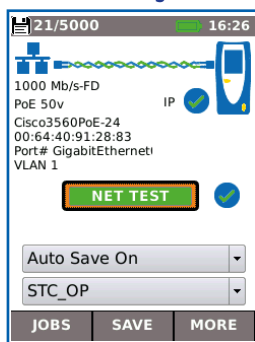


### Addressing the needs of today's network technicians

Today, network technicians have a broad selection of software troubleshooting tools at their disposal and whilst useful in certain situations and environments they do have limitations. NaviTEK NT on the other hand offers a comprehensive suite of test and troubleshooting functionality only found on dedicated hand-held testers:-

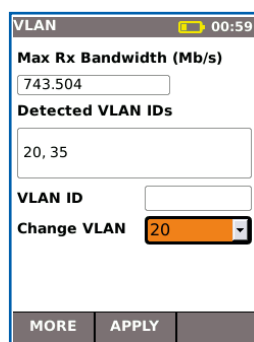
- Copper and fibre test interfaces
- Fast detection of link and IP information including duplex, speed, port ID, VLAN, DNS, DHCP, Gateway status and IP address
- Detects services such as ISDN, POTS and PoE
- Accurate wire mapping including length measurement and distance to fault
- Rugged, compact design permits use in confined spaces
- Not susceptible to virus and malware attack

### Port & network summary info



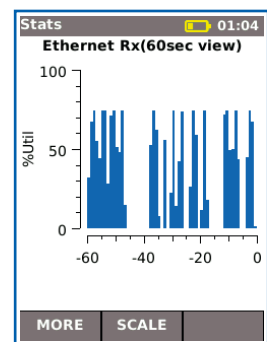
Press the Autotest button to display summary information and allow for detailed inspection of network parameters.

### VLAN detection & operation



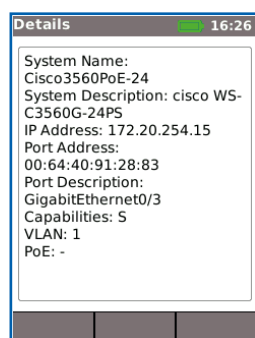
Automatic detection of VLAN ID's allows the user to configure NaviTEK NT for operation on a VLAN.

### Ethernet utilisation



Real time display of broadcast network traffic shown as a percentage of port speed for the previous 10 minutes.

### EDP/LLDP/CDP port information



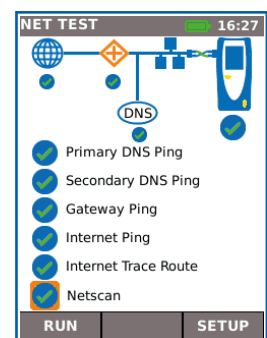
Show port information using Extreme Discovery Protocol (EDP), Link Layer Discovery Protocol (LLDP) and Cisco Discovery Protocol (CDP).

### Netscan



Display list of IP and MAC addresses of every device connected to the network.

### Network Probe

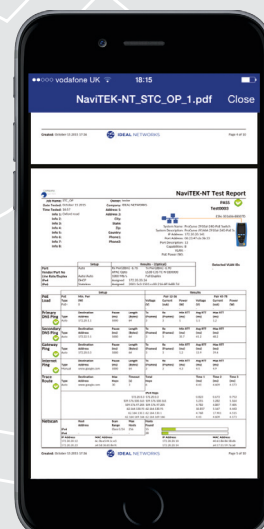
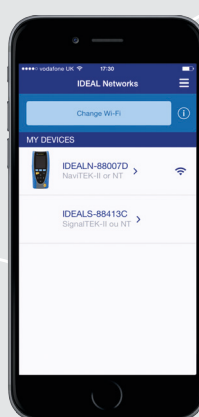


View network illustration to verify test results of each network component.

Send test reports from anywhere using the free app



**IDEAL**  
AnyWARE



## Step 1

### Test

- Create job folder
- Enter job site information
- Perform autotest on copper/fibre cabling and copper/fibre networks

## Step 2

### Connect

- Activate NaviTEK NT wireless hotspot
- Connect your mobile phone or tablet with the IDEAL AnyWARE App
- Transfer test reports to your mobile device
- View test reports

## Step 3

### Send

- Select reports (PDF or CSV) to send
- Select preferred transfer method – email, ftp, cloud storage etc.
- Send file
- Alternatively save test reports to USB key

Download the FREE App today



## NaviTEK NT

Performs tests for copper cabling and networks, including:

- Display network configuration - IPv4 / IPv6 compatible
- Advanced wiremap for miswires, split pairs, opens and shorts
- Distance to opens and shorts (TDR)
- PoE/PoE+ detection
- Tone generator for cable tracing
- Ping and Traceroute testing
- Hub blink for port identification
- DHCP client
- Switch detection - 10/100/1000 Mb/s
- User-exchangeable RJ45 inserts
- Support for up to 12 wiremap remotes
- Backlit colour screen

## NaviTEK NT Plus

All the features of NaviTEK NT as well as:

- Autotest button performs a suite of network tests
- Network Probe provides detailed port and network information of each device
- Port identification using EDP/CDP/LLDP protocols
- VLAN detection and support
- Network scan
- Traffic utilisation bar graph
- Internal memory for 5000 test reports
- Generate test reports (PDF or CSV)
- Sent test reports from your mobile device using the free IDEAL AnyWARE App

## NaviTEK NT Pro

All of the features of NaviTEK NT Plus as well as:

- Fibre optic cable interface
- Logon using the 802.1x protocol
- Optical interface with power indication

# NaviTEK NT

## Network Troubleshooter

## Test Reporting

NaviTEK NT automatically generates test reports in PDF or CSV format.

The summary page of each report can be customised to include logo, company and operator details. Choose between 3 different reports than can show either passed, failed or all test reports in each report:

- Summary
- Brief
- Full (see example on the right side)

## Ordering Information

Part No.	Kit Contents
153001	<b>NaviTEK NT - Network Troubleshooter.</b> 1 x NaviTEK NT test unit, 1 x Remote unit No. 1, 4 x AA dry cell batteries (non-rechargeable), 2 x Patch cables - 30cm, Cat. 5e STP, 1 x Quick reference guide, 1 x Carry case
151005	<b>NaviTEK NT Plus- Network Troubleshooter. Touchscreen</b> 1 x NaviTEK NT PLUS test unit, 1 x Remote unit No. 1, 1 x Rechargeable Power Module 1 x PSU EU/UK/US adaptors, 2 x Patch cables - 30cm, Cat. 5e STP, USB Wi-Fi adapter, 1 x Quick reference guide, 1 x Carry case
151006	<b>NaviTEK NT Pro - Network Troubleshooter. Touchscreen</b> 1 x NaviTEK NT PRO test unit, 1 x Remote unit No. 1, 1 x Rechargeable Power Module 1 x PSU EU/UK/US adaptors, 2 x Patch cables - 30cm, Cat. 5e STP, USB Wi-Fi adapter, 1 x Quick reference guide, 1 x Carry case



NaviTEK-NT Test Report									
<b>Job Name:</b> MyJob <b>Date Tested:</b> March 1 2010 <b>Time Tested:</b> 01:48 <b>Info 1:</b> <b>Info 2:</b> <b>Info 3:</b> <b>Info 4:</b> <b>Info 5:</b> <b>Info 6:</b> <b>Info 7:</b> <b>Info 8:</b>					<b>Owner:</b> Isador <b>Company:</b> IDEAL Industries <b>Address 1:</b> Oxford Road <b>Address 2:</b> <b>City:</b> High Wycombe <b>State:</b> <b>Zip:</b> HP14 3JX <b>Country:</b> UK <b>Phone1:</b> <b>Phone2:</b>				
					<b>System Name:</b> ProCurve 2910al-24G-PoE Switch <b>System Description:</b> ProCurve 2910al-24G-PoE Switch <b>IP Address:</b> 172.20.20.141 <b>Port Address:</b> 00:22:47:cb:3b:3c <b>Port Description:</b> 4 <b>Capabilities:</b> B <b>VLAN:</b> - <b>PoE Power (W):</b> 9.9				
					<b>Detected VLAN IDs</b>				
<b>Setup</b> <b>Port:</b> Auto <b>Line Rate:</b> Auto <b>Duplex:</b> Auto <b>IPv4:</b> DHCP <b>IPv6:</b> Stateless					<b>Results</b> <b>Rate:</b> 100 Mbps <b>Duplex:</b> Full Duplex <b>Assigned:</b> 172.20.20.24 <b>Assigned:</b> 2001:5c0:1501::c00:216:4ff:fe88:7d				
<b>PoE Load</b> <b>Port:</b> PoE <b>Type:</b> PoE <b>Power:</b> 3					<b>Results</b> <b>Pair 12-18:</b> <b>Voltage:</b> (mV) <b>Current:</b> (mA) <b>Power:</b> (W) <b>Voltage:</b> (mV) <b>Current:</b> (mA) <b>Power:</b> (W)				
<b>Primary DNS Ping</b> <b>Type:</b> Echo <b>Destination:</b> 172.20.1.1 <b>Packet:</b> 64 <b>Length:</b> 64 <b>Time:</b> 1000					<b>Results</b> <b>TX:</b> (ms) <b>Rx:</b> (ms) <b>Min RTT:</b> (ms) <b>Avg RTT:</b> (ms) <b>Max RTT:</b> (ms)				
<b>Secondary DNS Ping</b> <b>Type:</b> Echo <b>Destination:</b> 172.20.1.1 <b>Packet:</b> 64 <b>Length:</b> 64 <b>Time:</b> 1000					<b>Results</b> <b>TX:</b> (ms) <b>Rx:</b> (ms) <b>Min RTT:</b> (ms) <b>Avg RTT:</b> (ms) <b>Max RTT:</b> (ms)				
<b>Gateway Ping</b> <b>Type:</b> Echo <b>Destination:</b> 172.20.0.0 <b>Packet:</b> 64 <b>Length:</b> 64 <b>Time:</b> 1000					<b>Results</b> <b>TX:</b> (ms) <b>Rx:</b> (ms) <b>Min RTT:</b> (ms) <b>Avg RTT:</b> (ms) <b>Max RTT:</b> (ms)				
<b>Internet Ping</b> <b>Type:</b> Manual <b>Destination:</b> www.google.com <b>Packet:</b> 64 <b>Length:</b> 64 <b>Time:</b> 1000					<b>Results</b> <b>TX:</b> (ms) <b>Rx:</b> (ms) <b>Min RTT:</b> (ms) <b>Avg RTT:</b> (ms) <b>Max RTT:</b> (ms)				
<b>Trace Route</b> <b>Type:</b> Auto <b>Destination:</b> www.google.com <b>Max:</b> 30 <b>Time:</b> 30					<b>Results</b> <b>Total:</b> 30 <b>Time 1:</b> 4.32 <b>Time 2:</b> 10.900 <b>Time 3:</b> 4.084				
<b>NetScan</b> <b>Host:</b> 172.20.20.141 <b>IP Address:</b> 172.20.20.141 <b>MAC Address:</b> 00:11:22:33:44:55 <b>Scan:</b> 172.20.20.141 <b>Max:</b> 172.20.20.141 <b>Time:</b> 172.20.20.141					<b>Results</b> <b>IP Address:</b> 172.20.20.141 <b>MAC Address:</b> 00:11:22:33:44:55 <b>Scan:</b> 172.20.20.141 <b>Max:</b> 172.20.20.141 <b>Time:</b> 172.20.20.141				

## Optional Accessories

Part No.	Description
MGKSX1	1 x 1000BASE-SX Fibre kit. Includes 850nm SFP (Small Form factor Pluggable) SX transceiver, LC/LC and LC/SC duplex multimode cables and SC/SC duplex adaptor
MGKLX2	1 x 1000BASE-LX Fibre kit. Includes 1310nm SFP (Small Form factor Pluggable) LX transceiver, LC/LC and LC/SC duplex singlemode cables and SC/SC duplex adaptor

For a full list of optional accessories, please visit our website.

## Basic Specifications

Max. No. of Jobs	Max. No. of Stored Test	Max. Length	Battery Life	Dimensions per handset in mm	Weight per handset
50	5000	181 m/593 ft.	5 hours	175 x 80 x 40	0.4 kg

For detailed specifications, please visit our website: [www.black-box.eu](http://www.black-box.eu).



Apple and the Apple logo are trademarks of Apple Inc., registered in the U.S. and other countries. App Store is a service mark of Apple Inc.

Android is a trademark of Google Inc.

All Rights Reserved. IDEAL, IDEAL NETWORKS, IDEAL AnyWARE and the NaviTEK logos are trademarks or registered trademarks of IDEAL INDUSTRIES LIMITED or IDEAL INDUSTRIES, INC.

Specification subject to change without notice. E&OE

© IDEAL Networks 2015

Publications no.: 151851, Rev. 1